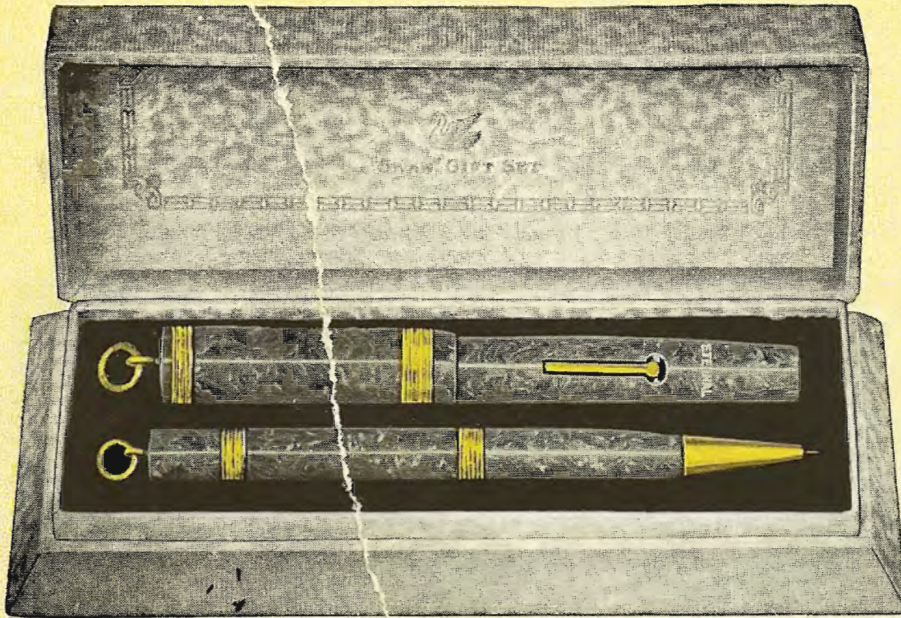




"Swan Eternal" Pens



J542/Etn, \$8.00



M464/Etn, \$11.00

Mabie, Todd & Co.

243 W. 17th ST.
NEW YORK



209 So. STATE ST.
CHICAGO



"Swan Eternal" Pens

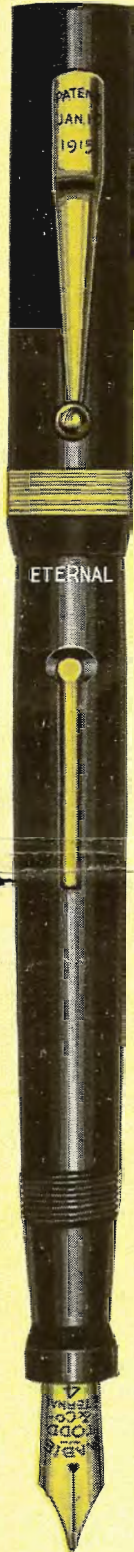


J46 /Etn

J46 /Etn\$7.00

L46 /Etn\$7.00

E46 /Etn\$7.00



E44 /Etn

J44 /Etn\$6.00

L44 /Etn\$6.00

E44 /Etn\$6.00



L54 /Etn Clip

J54 /Etn Clip...\$5.00

L54 /Etn Clip...\$5.00

E54 /Etn Clip...\$5.00



J54 /Etn Ring

J54 /Etn Ring...\$5.00

L54 /Etn Ring...\$5.00

E54 /Etn Ring...\$5.00

JADE "ETERNALITE" (Green)

LAPIS "ETERNALITE" (Blue)

EBONITE "ETERNALITE" (Black)



"Swan Eternal" Pens



M54 /Etn Ring

B54 /Etn Clip

M44 /Etn

B46 /Etn

M48 /Etn

B54 /Etn Ring..\$5.00

B54 /Etn. Clip..\$5.00

BLACK RUBBER
B44 /Etn\$6.00

B46 /Etn\$7.00

B48 /Etn\$9.00

M54 /Etn Ring..\$5.00

M54 /Etn Clip..\$5.00

MOTTLED RUBBER
M44 /Etn\$6.00

M46 /Etn\$7.00

M48 /Etn\$9.00

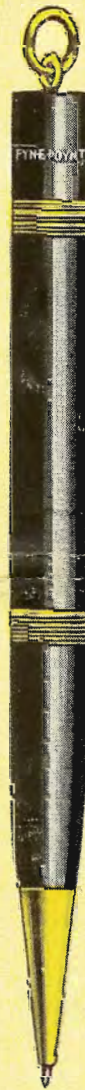
Pens illustrated on this page have polished hard rubber holders, those on the opposite page have holders of unbreakable "Eternalite" and are unconditionally guaranteed. All are fitted with heavy "Swan Eternal" nibs tipped with hard iridium and made by master craftsmen.



"Fyne Poynt" Pencils



"Fyne Poynt" pencils propel, repel and expel the leads and are of sturdy construction. They are made in styles to match the "Swan Eternal" pen and may be had boxed in sets of any combination.



J420 / Etn
(Oversize)

L322 / Etn Clip

E322 / Etn Ring

M320 / Etn

J420 / Etn\$4.00

J322 / Etn Clip..\$3.00

J322 / Etn Ring..\$3.00

J320 / Etn\$3.00

L420 / Etn\$4.00

L322 / Etn Clip..\$3.00

L322 / Etn Ring..\$3.00

L320 / Etn\$3.00

E420 / Etn\$4.00

E322 / Etn Clip..\$3.00

E322 / Etn Ring..\$3.00

E320 / Etn\$3.00

B420 / Etn\$4.00

B322 / Etn Clip..\$3.00

B322 / Etn Ring..\$3.00

B320 / Etn\$3.00

M420 / Etn\$4.00

M322 / Etn Clip..\$3.00

M322 / Etn Ring..\$3.00

M320 / Etn\$3.00

JADE "ETERNALITE" (Green)

LAPIS "ETERNALITE" (Blue)

EBONITE "ETERNALITE" (Black)

BLACK RUBBER

MOTTLED RUBBER